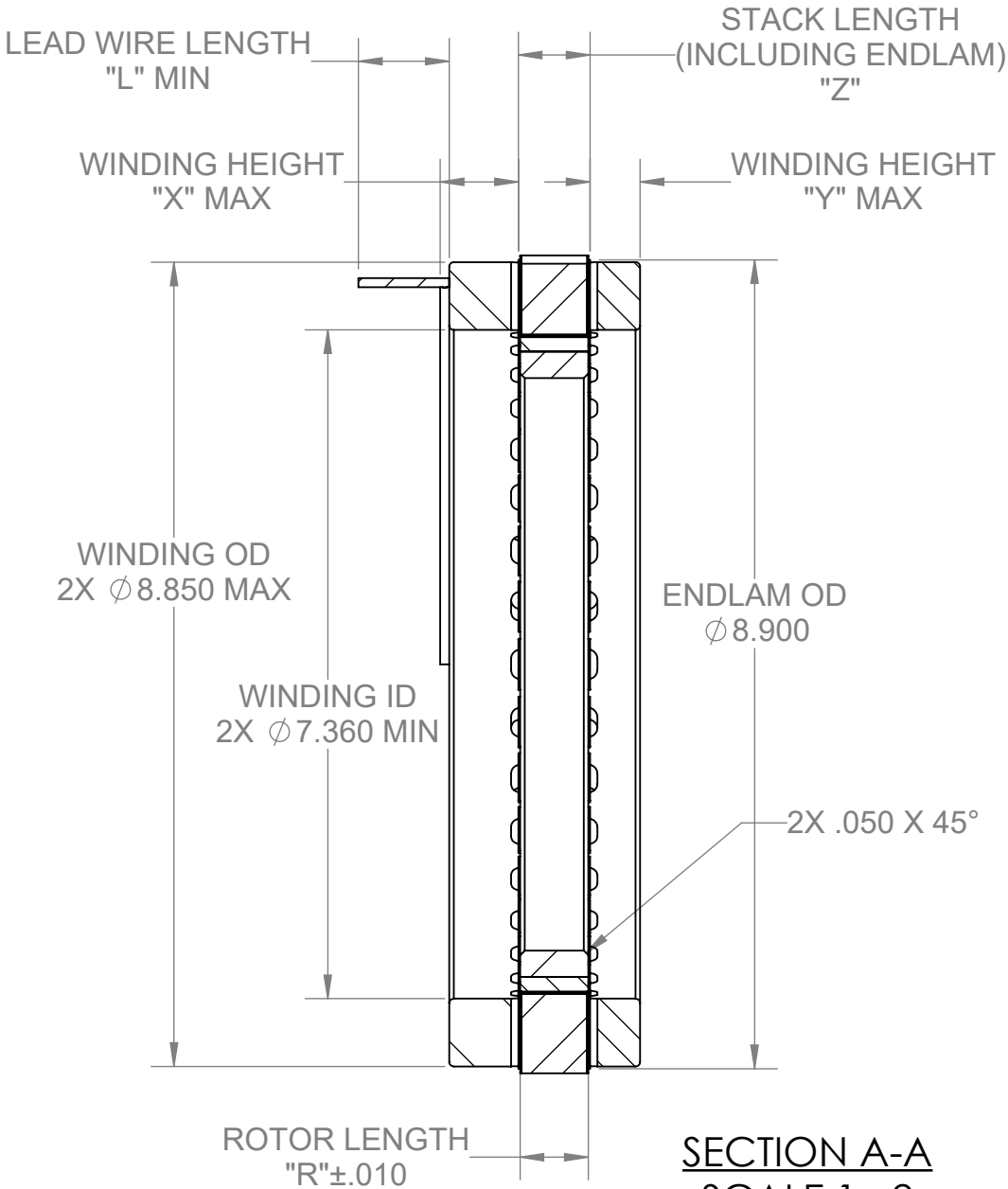
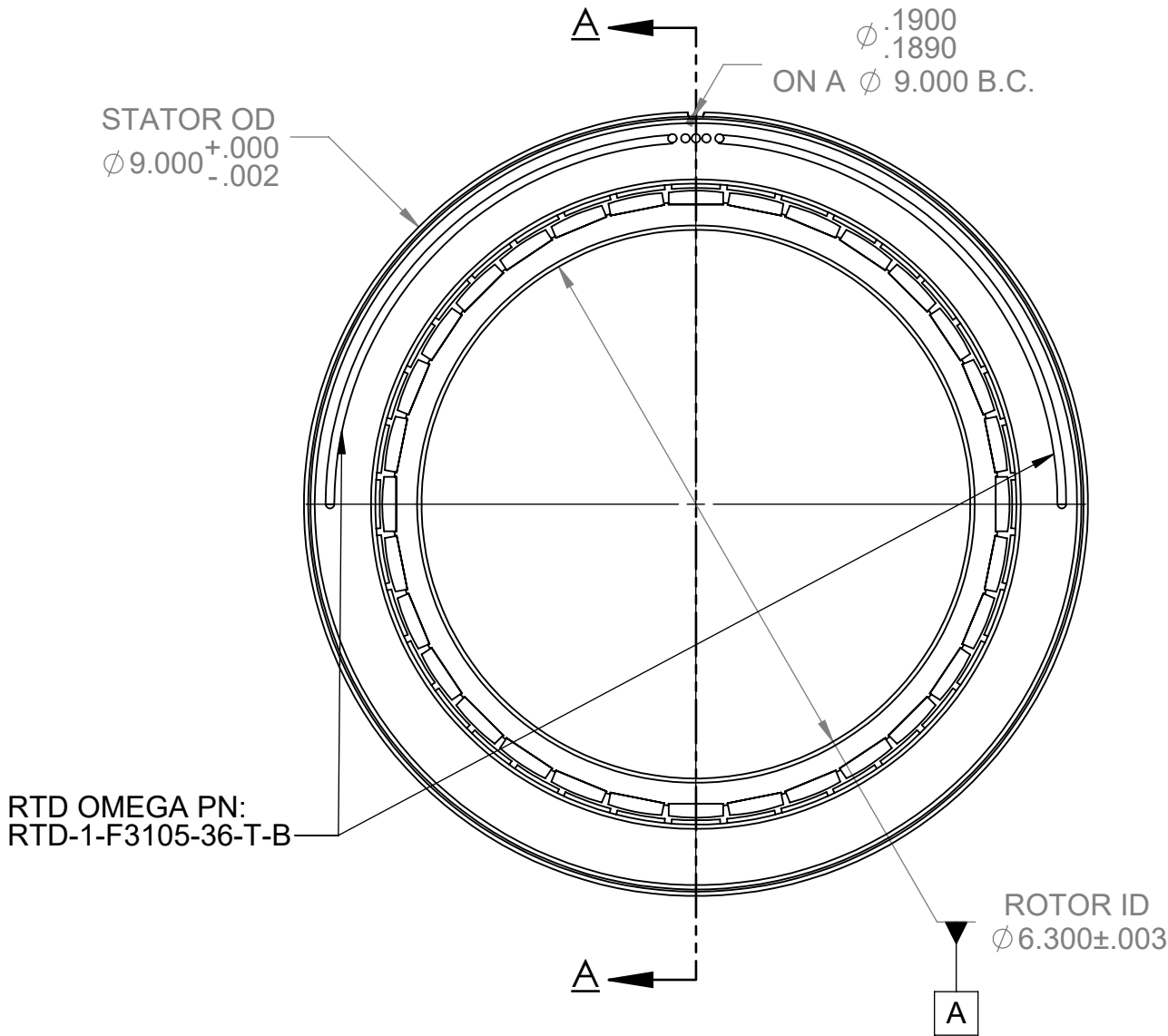


PROPRIETARY STATEMENT: THIS DOCUMENT CONTAINS CONFIDENTIAL INFORMATION PROPRIETARY TO AVEOX, INC. IT MAY NOT BE DUPLICATED IN WHOLE OR IN PART, DISCLOSED TO UNAUTHORIZED PERSONS, OR USED IN THE MANUFACTURE OF PARTS, ASSEMBLIES, OR FOR MANUFACTURING PROCESSES DEFINED HEREIN, WITHOUT PRIOR WRITTEN PERMISSION FROM AVEOX, INC.

NOTES: (UNLESS OTHERWISE SPECIFIED)

1. STATOR LEAD WIRE PER M22759/9
PHASE A: RED
PHASE B: WHITE
PHASE C: BLACK
2. SEE TABLE BELOW FOR CONFIGURATION



UNLESS OTHERWISE SPECIFIED: DIMENSIONS ARE IN INCHES			CONTRACT No.		AVEOX, INC. 2265A Ward Avenue Simi Valley, CA. 93065 805-915-0200 (Phone) 805-915-0201 (FAX)			
TOLERANCE ON ANGLE: $\pm 0.5^\circ$ ON DECIMALS: INCH MILLIMETER SURFACE(μ in.) .XX $\pm .01$.X $\pm .5$ mm .XXX $\pm .005$.XX $\pm .1$ mm REMOVE ALL BURRS BRAKE CORNERS R.005/.010. INTERPRET DRAWING PER ASME Y14.5-2009 DO NOT SCALE DRAWING DIMENSIONS APPLY AFTER SURFACE FINISH			APPROVALS		DATE		TITLE:	
THIRD ANGLE PROJECTION			DRAWN		E. NG		11/7/19	
			CHECK					
			ENGINEER					
							SIZE	
							CAGE CODE	
							DWG No.	
							REV	
							SCALE: NONE	
							CALC. WEIGHT:	
							SHEET 1 OF 2	

4

3

2

1

PROPRIETARY STATEMENT: THIS DOCUMENT CONTAINS CONFIDENTIAL INFORMATION PROPRIETARY TO AVEOX, INC. IT MAY NOT BE DUPLICATED IN WHOLE OR IN PART, DISCLOSED TO UNAUTHORIZED PERSONS, OR USED IN THE MANUFACTURE OF PARTS, ASSEMBLIES, OR FOR MANUFACTURING PROCESSES DEFINED HEREIN, WITHOUT PRIOR WRITTEN PERMISSION FROM AVEOX, INC.

REVISIONS			
REV.	DESCRIPTION	DATE	APPROVED
-	See Sheet1	-	-

PART NUMBER	DESCRIPTION	ROTOR LENGTH "R"	LEAD WIRE AWG	LEAD WIRE LENGTH "L"	STACK LENGTH "Z" INCLUDING ENDLAM	ENDTURN HEIGHT, LEAD SIDE "X"	ENDTURN HEIGHT, BOTTOM "Y"
6100346-01	O&M STATOR AND ROTOR SET 9007-32P/12, SENSORLESS	0.750	14	12	0.83	0.86	0.55
6100346-02	O&M STATOR AND ROTOR SET 9010-32P/12, SENSORLESS	1.000	14	12	1.08	0.86	0.55
6100346-03	O&M STATOR AND ROTOR SET 9015-32P/12, SENSORLESS	1.500	14	12	1.58	0.86	0.55
6100346-04	O&M STATOR AND ROTOR SET 9022-32P/12, SENSORLESS	2.250	14	12	2.33	0.86	0.55
6100346-05	O&M STATOR AND ROTOR SET 9030-32P/9, SENSORLESS	3.000	14	12	3.08	0.86	0.55

AVEOX

POWER TO MOTION

AVEOX, INC.

2265A Ward Avenue Simi Valley, CA. 93065

805-915-0200 (Phone) 805-915-0201 (FAX)

TITLE:

O&M STATOR AND ROTOR SET 9000-32P, SENSORLESS, TABULATED

SIZE	CAGE CODE	DWG No.	REV
B	1C2S2	6100346-XX	A

SCALE: NONE	SHEET	2 OF 2
-------------	-------	--------

4

3

2

1

FORM: 6890115-02 Rev. C